

Project Name: Town of Hillsborough, Utilities Department
Adron F. Thompson Addition and Renovation
Project No.: 2231.01

ADDENDUM No. 4

Issued January 23, 2026

GENERAL NOTE: The Contract Documents include all Drawings and Specifications, plus all Addenda. The Drawings and the Specifications are complementary and are to be taken together for a complete interpretation of the Work. Contractors shall review a complete set of Contract Documents prior to bidding the work.

Modifications to the original contract documents dated 12/19/2025 for this project shall be made as follows:

The attached documents are either clouded with a revisions date including ADDENDUM No.4, 01.23.2026 or if Specifications are edited, the section or text added is in red to clarify the revision. If full specification sections are added these are not in all red, but the header lists the Addendum number and date that the specification section was issued.

PROJECT MANUAL SPECIFICATIONS:

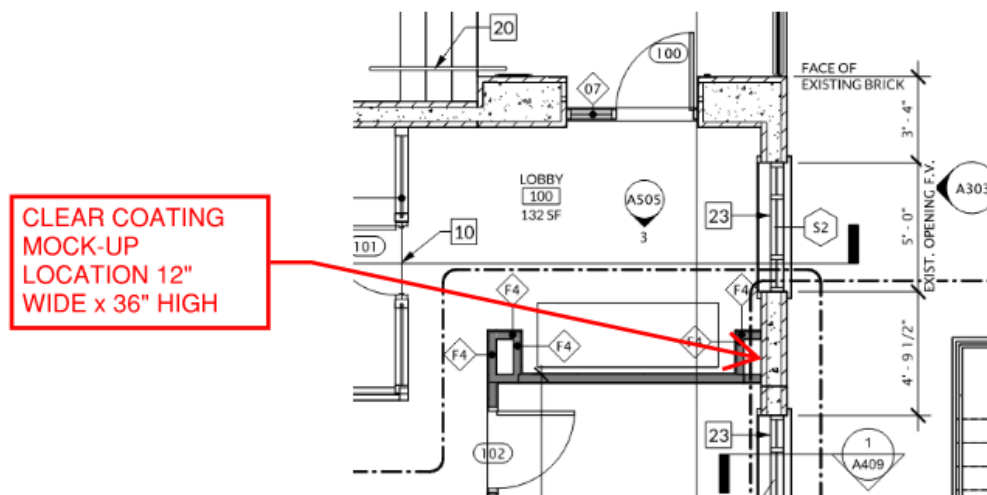
1. Replace Specification Section **000400 TABLE OF CONTENTS** with the attached of the same number. *The Specification was edited to add the **SECTION 085123.13 – STEEL HISTORIC REPLICA WINDOWS** into the Table of Contents.*
2. Add Specification **SECTION 085123.13 – STEEL HISTORIC REPLICA WINDOWS** into the Contract Documents. This specification covers all window Types, **S1, S2, S3, S4, S5 & S6** shown in the drawings. **Full Specification is included in this Addenda.**
3. Specification **SECTION 283111 - DIGITAL, ADDRESSABLE FIRE ALARM SYSTEM** Section 1.5 QUALITY ASSURANCE B. Acceptable Manufacturers: Delete the second sentence that begins with “*No Alternates...* and ends with *...service contracts.*” . **Full Specification is not included in this Addenda.**
4. Specification **SECTION 283111 - DIGITAL, ADDRESSABLE FIRE ALARM SYSTEM** Section 1.5 QUALITY ASSURANCE C. Installer Qualifications: 1. Delete the entire sentence that states; *System to be provide and installed by the owner’s service contractor (BFPE).* The Town is not limiting the supplier / installer of the system other than any supplier must be certified to install the manufacturers listed above. **Full Specification is NOT included in this Addenda.**

DRAWINGS:

5. Drawing **A102 DEMOLITION PLAN MAIN LEVEL** Demolition Keynote 25 indicates to “*Scrape paint off existing brick to prepare for new finishes*”. Owner wants to preserve the “patina” of the existing painted brick, so this scope shall be revised to only scrape loose paint off the brick. **Revised Drawing is NOT included in this Addenda.**

6. Drawing **A205 RCP RENOVATION PLAN - MAIN LEVEL** All ceilings in the following Rooms, LOBBY 100, OFFICE 1 – 101, CONF. RM. – 102, OFFICE 3 – 103, OFFICE 2 – 104, CORRIDOR – 106, OFFICE 4 – 105 to be painted concrete finish where exposed and above the lay-in ceiling “clouds” – See Item 6 below. **Revised Drawing is NOT included in this Addenda.**

7. Drawing **A903 FINISH LEGEND AND SCHEDULES** the interior faces of the existing masonry exterior walls in the following Rooms, LOBBY 100, OFFICE 1 – 101, CONF. RM. – 102, OFFICE 3 – 103, OFFICE 2 – 104, CORRIDOR – 106, OFFICE 4 - 105 already has NOTE 25 to remove loose paint in the Demolition Plan per Item 3 above. All existing interior faces of the exterior brick walls will no longer be painted with PT-1 as the **ROOM FINISH SCHEDULE** indicates, instead, the interior faces of the exterior brick walls will be preserved with CWC-1 the “patina” of the original remaining paint, the white primer and the original interior brick showing through. To preserve this, these walls will have an interior clear coating applied over the brick and paint. The Basis of Design CWC-1 product shall be **KEIM Fixative/Consolidant** which is a clear binder, thinner and consolidation agent made of pure, liquid potassium silicate. Other products from Pecora, Sika or Prosoco that meet the composition and performance of the Basis of Design product will be allowed. Product is to be applied to all interior brick walls at the rate and coverage specified by the manufacturer to achieve a clear coating over the existing wall finish to preserve it and prevent peeling of the paint. Prior to coating the entire interior walls, a 12” Wide x 36” High test mock-up area shall be conducted on the interior walls where indicated below (Mock-up location will be behind framed walls in final renovation) to verify compatibility of the product with the existing materials and coatings intended to remain. **Revised Drawing is included in this Addenda.**



8. Drawing **A903 FINISH LEGEND AND SCHEDULES** the existing concrete ceilings and concrete exposed roof beams in the following Rooms, LOBBY 100, OFFICE 1 – 101, CONF. RM. – 102, OFFICE 3 – 103, OFFICE 2 – 104, CORRIDOR – 106, OFFICE 4 - 105 shall have the existing paint removed by scraping and new primer and ceiling white paint applied for concrete surfaces applied to provide a uniform finished painted surface for all concrete ceilings and roof beams. **Revised Drawing A903 is included in this Addenda.**
9. Replace sheet number **M202 MECHANICAL DUCTWORK PLAN – MAIN LEVEL** with the attached sheet of the same number. This Sheet was revised to clarify extents of the round duct in the main Level of the Original Building where ductwork is exposed.

ADDITIONAL INFORMATION:

10. Contractor shall include the application of an exterior penetration sealant on the Adron F. Thompson Building's Exterior Brick, precast sills, and medallions to limit moisture absorption. Basis of Design Product shall be **KEIM Silan 100 high-performance, breathable silane water repellent**. After cleaning the exterior brick as required in the contract, this product, or a comparable product like Pecora KlereSeal 940-S VOC, Prosoco - Siloxane PD, or Sika – Sikagard H-1000 shall be applied per the manufacturer's instructions to all exterior brick surfaces.

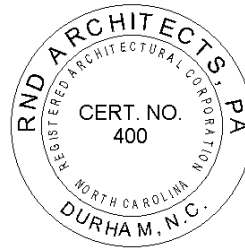
DESIGN TEAM RESPONSES TO CONTRACTOR QUESTIONS:

11. Bidder Question: *Per pre-bid agenda, "Owner's Security for Existing Green Building The owner would like to maintain or share access to cameras provided by the GC for security of the site to monitor and review footage capturing the green building on site since their security will be rendered nonfunctional with the project"*
 - a. *Can you please clarify if we just need to provide cameras or a dedicated team also to do 24*7 monitoring for the same ?*
Response: Owner has decided NOT to require Contractor to provide a video / Security.
 - b. *Can you please provide a site plan / footprint identifying the location and limits of the existing green building to be monitored ?*
Response: Site Plan not needed as we have removed the direction to provide a security.
 - c. *Will power be available from the site for the cameras, or should we plan to provide solar-powered units ?*
Response: Cameras not required to monitor the owner's building.
 - d. *Can you confirm if this would be needed for the entire duration of the project ?*
Response: Security of the owner's building is not required.
12. Bidder Question: *Plans calls out a 8" cove base VB2 (there's a 2400 In ft min order as this is a special order item) but we only need 850 In ft... they do have a 7" base that could be used if needed with no min order amount ?*
Response: VB2 is revised to indicate 8" high x ¾" thick poplar wood base painted. All rooms scheduled to have VB2 shall now receive painted wood base.

13. Bidder Question: Do you know where I can find the specification for the concrete sealer? The only reference I see is in the plans on the finish legend and not in division 3 or 9??

Response: Basis of Design Concrete Sealer (SC) is scheduled to be Ghost Shield per the FINISH LEGEND, model of sealer is Lithi-Tek 9500 Penetrating Waterproofer & Densifier with comparable / acceptable manufacturers / products as Laticrete L&M Lion Hard or Sika - Sikafloor-956 LD.

END OF ADDENDUM No. 4



SECTION 000400 - TABLE OF CONTENTS

ITEMS BELOW APPEAR IN VOLUME 1 of 2

DIVISION 00 - PROCUREMENT AND CONTRACTING REQUIREMENTS

- SECTION 000100 - PROFESSIONAL SEALS PAGE
- SECTION 000200 - ADVERTISEMENT FOR BIDS
- SECTION 000300 - NOTICE TO BIDDERS
- SECTION 000301 – AIA A701 – 2018 INSTRUCTIONS TO BIDDERS
- SECTION 000400 - TABLE OF CONTENTS
- SECTION 000500 - GENERAL CONDITIONS OF THE CONTRACT AIA A201-2017
- SECTION 000600 - SUPPLEMENTARY GENERAL CONDITIONS
 - EXHIBIT A TOWN OF HILLSBOROUGH INSURANCE REQUIREMENTS

BID FORMS

- SECTION 000700 - FORM OF PROPOSAL
- SECTION 000800 - HUB / MINORITY PARTICIPATION FORMS
- SECTION 000900 - FORM OF BID BOND
- SECTION 001000 - FORM OF CONSTRUCTION CONTRACT AIA A101-2017
 - FORM OF PERFORMANCE BOND
 - FORM OF PAYMENT BOND
- SECTION 003119 - EXISTING CONDITION INFORMATION
- SECTION 003126 - EXISTING HAZARDOUS MATERIAL INFORMATION

DIVISION 01 - GENERAL REQUIREMENTS

- SECTION 011000 - SUMMARY
- SECTION 012100 - ALLOWANCES
- SECTION 012200 - UNIT PRICES
- SECTION 012300 - ALTERNATES
- SECTION 012500 - SUBSTITUTION PROCEDURES
- SECTION 012600 - CONTRACT MODIFICATION PROCEDURES
- SECTION 012900 - PAYMENT PROCEDURES
- SECTION 013100 - PROJECT MANAGEMENT AND COORDINATION
- SECTION 013200 - CONSTRUCTION PROGRESS DOCUMENTATION
- SECTION 013300 - SUBMITTAL PROCEDURES
- SECTION 014000 - QUALITY REQUIREMENTS
- SECTION 014200 - REFERENCES
- SECTION 015000 - TEMPORARY FACILITIES AND CONTROLS
- SECTION 017300 - EXECUTION
- SECTION 017700 - CLOSEOUT PROCEDURES
- SECTION 017823 - OPERATION AND MAINTENANCE DATA
- SECTION 017900 - DEMONSTRATION AND TRAINING

DIVISION 02 - EXISTING CONDITIONS

- SECTION 024119 - SELECTIVE DEMOLITION

DIVISION 03 - CONCRETE

SECTION 033000 – CAST IN PLACE CONCRETE
SECTION 034500 – PRECAST ARCHITECTURAL CONCRETE

DIVISION 04 - MASONRY

SECTION 042000 – UNIT MASONRY
SECTION 042113 – BRICK MASONRY

DIVISION 05 - METALS

SECTION 051200 – STRUCTURAL STEEL FRAMING
SECTION 053100 – STEEL DECKING
SECTION 055000 – METAL FABRICATIONS
SECTION 055100 – METAL STAIRS
SECTION 055213 – PIPE AND TUBE RAILINGS

DIVISION 06 - WOOD, PLASTICS, AND COMPOSITES

SECTION 061000 – ROUGH CARPENTRY
SECTION 061600 – SHEATHING
SECTION 064116 – PLASTIC LAMINATE FACED ARCHITECTURAL CABINETS

DIVISION 07 - THERMAL AND MOISTURE PROTECTION

SECTION 070543.02 – CLADDING SUPPORT SYSTEM
SECTION 071113 – BITUMINOUS DAMPPROOFING
SECTION 071326 – SELF-ADHERING SHEET WATERPROOFING
SECTION 072100 - THERMAL INSULATION
SECTION 072616 – UNDER-SLAB VAPOR BARRIER
SECTION 072726 – FLUID-APPLIED MEMBRANE AIR BARRIERS
SECTION 074113 – METAL ROOF PANELS
SECTION 074213 – INTERLOCKING METAL WALL PANELS
SECTION 076200 - SHEET METAL FLASHING AND TRIM
SECTION 077253 – SNOW GUARDS
SECTION 079200 - JOINT SEALANTS

DIVISION 08 - OPENINGS

SECTION 081213 - HOLLOW METAL FRAMES
SECTION 081216 - ALUMINUM FRAMES
SECTION 081416 - FLUSH WOOD DOORS
SECTION 083600 – SECTIONAL OVERHEAD DOOR
SECTION 084113 – ALUMINUM-FRAMED EXTRANCES AND STOREFRONTS
SECTION 085123.13 – STEEL HISTORIC REPLICA WINDOWS
SECTION 087100 - DOOR HARDWARE
SECTION 088000 - GLAZING

DIVISION 09 - FINISHES

SECTION 092900 - GYPSUM BOARD
SECTION 093000 – TILING
SECTION 095123 - ACOUSTICAL TILE CEILINGS
SECTION 096519 – RESILIENT TILE FLOORING
SECTION 096723 – RESINOUS FLOORING
SECTION 096813 - TILE CARPETING

SECTION 099123 - INTERIOR PAINTING

DIVISION 10 - SPECIALTIES

SECTION 101419 – DIMENSIONAL LETTER SIGNAGE
SECTION 102113 – TOILET COMPARTMENTS
SECTION 102600 – INTERIOR HANDRAILING SYSTEMS
SECTION 102601 – WALL AND DOOR PROTECTION
SECTION 102800 - TOILET, BATH, AND LAUNDRY ACCESSORIES
SECTION 104413 - FIRE PROTECTION CABINETS
SECTION 105100 – LOCKERS AND LOCKER ROOM BENCHES
SECTION 107300 – ALUMINUM WALKWAY COVERINGS
SECTION 107500 - FLAGPOLES

DIVISION 11 - EQUIPMENT

NOT APPLICABLE

DIVISION 12 - FURNISHINGS

SECTION 122413 – ROLLER WINDOW SHADES
SECTION 123661 - SIMULATED STONE COUNTERTOPS

DIVISION 13 - SPECIAL CONSTRUCTION

SECTION 133419 - METAL BUILDING SYSTEMS

DIVISION 14 - CONVEYING EQUIPMENT

NOT APPLICABLE

ITEMS BELOW APPEAR IN VOLUME 2 of 2

DIVISION 21 - FIRE SUPPRESSION

NOT APPLICABLE

DIVISION 22 - PLUMBING

SECTION 220500 – COMMON WORK RESULTS FOR PLUMBING
SECTION 220505 – EXCAVATION AND BACKFILL
SECTION 220510 – PIPE TESTING
SECTION 220513 – MOTORS AND CONTROLLERS
SECTION 220519 – METERS AND GAGES FOR PLUMBING
SECTION 220523 – GENERAL-DUTY VALVES FOR PLUMBING
SECTION 220529 – HANGERS AND SUPPORTS FOR PLUMBING
SECTION 220553 – IDENTIFICATION FOR PLUMBING AND EQUIPMENT
SECTION 220700 – PLUMBING INSULATION
SECTION 221116 – DOMESTIC WATER PIPING
SECTION 221119 – DOMESTIC WATER PIPING SPECIALTIES
SECTION 221316 – SANITARY WASTE AND VENT PIPING
SECTION 221319 – SANITARY WASTE PIPING SPECIALTIES
SECTION 223300 – ELECTRIC DOMESTIC WATER
SECTION 224000 – PLUMBING FIXTURES

DIVISION 23 - HEATING, VENTILATING, AND AIR-CONDITIONING (HVAC)

SECTION 230500 – COMMON WORK RESULTS FOR HVAC
SECTION 230505 – ROOF CURBS AND SUPPORTS
SECTION 230513 – COMMON MOTOR AND CONTROLLER REQUIREMENTS FOR HVAC
SECTION 230214 – VARIABLE FREQUENCY DRIVES
SECTION 230519 – METERS AND GAGES FOR HVAC
SECTION 230523 – VALVES FOR HVAC PIPING
SECTION 230529 – HANGERS AND SUPPORTS FOR HVAC PIPING AND EQUIPMENT
SECTION 230533 – HEAT TRACE FOR HVAC PIPING
SECTION 230553 – IDENTIFICATION FOR HVAC PIPING DUCTS AND EQUIPMENT
SECTION 230593 – TESTING, ADJUSTING, AND BALANCING FOR HVAC
SECTION 230700 – HVAC DUCT INSULATION
SECTION 230707 – HVAC EQUIPMENT INSULATION
SECTION 230800 – COMMISSIONING FOR HVAC SYSTEMS
SECTION 230900 – INSTRUMENTATION AND CONTROL
SECTION 231123 – NATURAL GAS PIPING
SECTION 232300 – REFRIGERANT PIPING
SECTION 233113 – METAL DUCTS
SECTION 233300 – AIR DUCT ACCESSORIES
SECTION 233423 – HVAC POWER VENTILATORS
SECTION 233713 – DIFFUSERS, REGISTERS, AND GRILLES
SECTION 234100 – PARTICULATE AIR FILTRATION
SECTION 237413 – MODULAR OUTDOOR AIR HANDLING UNIT
SECTION 237433 – PACKAGE OUTDOOR, HEATING & COOLING MAKEUP AIR CONDITIONERS
SECTION 238127 – DUCTLESS SPLIT AIR CONDITIONERS

DIVISION 25 - INTEGRATED AUTOMATION

NOT APPLICABLE

DIVISION 26 - ELECTRICAL

- SECTION 260500 – COMMON WORK RESULTS
- SECTION 260519 – LOW-VOLTAGE CONDUCTORS AND CABLES
- SECTION 260526 – GROUNDING AND BONDING FOR ELECTRICAL SYSTEMS
- SECTION 260529 – HANGERS AND SUPPORTS FOR ELECTRICAL SYSTEMS
- SECTION 260533 – RACEWAY AND BOXES FOR ELECTRICAL SYSTEMS
- SECTION 260534 – VOICE AND DATA COMMUNICATIONS SYSTEMS
- SECTION 260553 – IDENTIFICATION FOR ELECTRICAL SYSTEMS
- SECTION 260923 – LIGHTING CONTROL DEVICES
- SECTION 262416 – PANELBOARDS
- SECTION 262726 – WIRING DEVICES
- SECTION 262813 – FUSES
- SECTION 262816 – ENCLOSED SWITCHES AND CIRCUIT BREAKERS
- SECTION 263213 – PACKAGED ENGINE GENERATORS
- SECTION 263600 – TRANSFER SWITCHES
- SECTION 265100 – INTERIOR LIGHTING

DIVISION 27 - COMMUNICATIONS

NOT APPLICABLE

DIVISION 28 - ELECTRONIC SAFETY AND SECURITY

SECTION 283111 - DIGITAL, ADDRESSABLE FIRE ALARM SYSTEM

DIVISION 31 - EARTHWORK

- SECTION 311000 – SITE CLEARING
- SECTION 312000 – EARTH MOVING

DIVISION 32 - EXTERIOR IMPROVEMENTS

- SECTION 321216 – ASPHALT PAVING
- SECTION 321313 – CONCRETE PAVING
- SECTION 321373 – CONCRETE PAVING JOINT SEALANTS
- SECTION 321723 – PAVEMENT MARKINGS
- SECTION 323111 – VEHICULAR GATE OPERATORS
- SECTION 323113 – CHAIN LINK FENCES AND GATES
- SECTION 323223 – MODULAR RETAINING WALL
- SECTION 329200 – TURF AND GRASSES
- SECTION 329300 – PLANTS

DIVISION 33 - UTILITIES

- SECTION 333100 – SANITARY UTILITY SEWERAGE PIPING
- SECTION 334100 – STORM PIPE

DIVISION 34 - TRANSPORTATION

NOT APPLICABLE

DIVISION 35 - WATERWAY AND MARINE CONSTRUCTION

NOT APPLICABLE

DIVISION 40 - PROCESS INTEGRATION

NOT APPLICABLE

DIVISION 41 - MATERIAL PROCESSING AND HANDLING EQUIPMENT

NOT APPLICABLE

DIVISION 42 - PROCESS HEATING, COOLING, AND DRYING EQUIPMENT

NOT APPLICABLE

DIVISION 43 - PROCESS GAS AND LIQUID HANDLING, PURIFICATION AND STORAGE EQUIPMENT

NOT APPLICABLE

DIVISION 44 - POLLUTION CONTROL EQUIPMENT

NOT APPLICABLE

DIVISION 45 - INDUSTRY-SPECIFIC MANUFACTURING EQUIPMENT

NOT APPLICABLE

DIVISION 46 - WATER AND WASTEWATER EQUIPMENT

NOT APPLICABLE

DIVISION 48 - ELECTRICAL POWER GENERATION

NOT APPLICABLE

END OF TABLE OF CONTENTS

SECTION 085123.13 – STEEL HISTORIC REPLICA WINDOWS

PART 1 – GENERAL

1.2 DESCRIPTION

- A. Work included:
 - 1. Hot-rolled steel weatherstripped windows with fixed configurations.
 - 2. All window anchors, mullions, covers and trim.
 - 3. Factory applied Finishing System.
- B. Related work specified elsewhere:
 - 1. Glass, glazing and glazing materials, Section 08810.
 - 2. Perimeter caulking, Section 07915.
 - 3. Miscellaneous structural items, Section 05100.

1.2 QUALITY ASSURANCE

- A. Manufacturer shall have not less than 10 years experience in the fabrication of heavy custom steel windows and be a member of The Steel Window Institute (SWI).
- B. Installation of windows shall be done by experienced window installers.
- C. Allowable tolerances: Size dimensions + 1/16 inch.
- D. Source quality control:
 - 1. Air infiltration test:
 - a. Products must be independently lab tested in accordance with ASTM E283.
 - b. Air infiltration to meet or exceed 0.30 CFM/SQFT with differential pressure across window unit of 6.24 PSF.
 - 2. Water penetration test:
 - a. Products must be independently lab tested and meet or exceed ASTM E331.
 - b. No water penetration for 15 minutes when window is subjected to a rate of flow of 5 gal./hr/sq.ft with differential pressure across window unit of 6.24 PSF. Pressure determined per job specific design pressure.
 - c. When weeps are required, ASTM E547 cyclic testing standard with differential pressure across window unit of 6.24 PSF shall be standard. Pressure determined per job specific design pressure.
 - 3. Field Testing:
 - a. Field testing criteria (when applicable) shall be in accordance with AAMA 502-12.
 - 4. Structural test:

- a. Meets or exceeds ASTM E330. Window frames, muntins, mullions should be design to withstand design pressures BASED on V-ult 115 mph per required ASCE 7.
5. Forced entry test:
 - a. Meets or exceeds ASTM F588.
 - b. Grade 40 @ 300 pounds.
6. Quality of finishing process shall meet or exceed the following designations (non-coastal application – greater than (1) mile from salt water and/or similar corrosive environments):
 - a. Paint Blistering: ASTM D714.
 - b. Humidity: ASTM D4585.
 - c. Salt Spray (Fog): ASTM B117.
 - d. Painted Products in Corrosive Environments: ASTM D1654.
 - e. Cyclic Fog/Dry (Prohesion): ASTM G85.
 - f. Slat Fog/UV Painted Metal: ASTM D5894.
 - g. Pull off Strength of Coating: ASTM D4541.
7. Upon request, the window manufacturer shall provide a test report from a qualified independent U.S. testing laboratory regularly engaged in testing windows to verify that products conform to test requirement as outlined.

1.3 SUBMITTALS

- A. Samples (as requested by architect)
- B. Shop drawings and manufacturer's literature:
 1. Submit for approval shop drawings showing window and installation details, including anchorage, fastening and recommended sealing methods within our systems.
 2. Dimensioned elevations showing window opening and window sizes.
 3. The manufacturer shall not commence any work until shop drawings have been returned "approved" with a stamp or signature.
 4. Color charts for finishes.

1.4 PRODUCT, STORAGE AND HANDLING

- A. The General Contractor shall be responsible for the protection and storage of the windows after delivery to the site.
- B. Store in designated areas in an upright position on wood slats or on a dry floor in a manner that will prevent damage. Ventilate canvas or plastic coverings to prevent humidity buildup.

1.5 WARRANTY

- A. Provide Hope's standard 10 year Limited Warranty.

PART 2 - PRODUCT AND FABRICATION

2.1 Manufacturers:

- A. Furnish all labor and materials to complete the fabrication of windows as shown on architect's drawings and as specified herein. All windows covered by this specification shall be domestically manufactured in the U.S.A.
- B. Manufacturers: Subject to compliance with requirements covered in this specification, Basis of Design product shall be Landmark175 Series Steel Replica Windows by Hope's Windows, Inc. – Jamestown, NY phone: 716-665-5124, e-mail: sales@hopeswindows.com or a comparable product by one of the following manufacturers.
 - 1. Graham Windows – SR 6700 Series Steel Replica Fixed
 - 2. Optimum Window Architectural Steel Windows – 2500 Series Fixed, Thermally Broken
- C. Window Designations on Drawings: All windows specified in this section are labeled in the drawings as Window Types **S1**, **S2**, **S3**, **S4**, **S5** or **S6** and are installed in the original openings of the Adron F. Thompson Building where the original steel windows are removed.

2.2 MATERIALS

- A. Heavy intermediate weatherstripped windows shall be manufactured from solid hot rolled steel profiles.
 - 1. Profiles made from steel with flanges rolled integrally at the mill.
 - 2. Frames must be thermally broken.
 - 3. Perimeter frames and ventilator profiles shall have glazing rebates providing an unobstructed glazing surface of at least 5/8".
 - 4. Glazing rebate surfaces must be perpendicular to the web or stem of the profile. Applied glazing rebate extensions and rebate surfaces that are tapered will not be acceptable.
 - 5. Combined weight of frame profiles shall be a minimum of 3.50 pounds per lineal foot. Frame profile alone shall not weigh less than 1.70 pounds per lineal foot.
 - 6. All steel profiles must be a minimum of 1-3/4" in depth.
 - 7. The frame profiles shall have integral grooves located in the exterior and interior bedding contacts for the reception of triple weatherstripping.
- B. Muntins
 - 1. True Divided Lite muntins:
 - a. Muntins shall be manufactured from solid hot-rolled steel, size to be determined by design.
 - b. Glazing rebate surfaces must be perpendicular to the stem of this profile. Rebate surfaces that are tapered will not be acceptable.
 - c. 1-3/4" tee shall weigh min. 1.57 pounds per lineal foot, the 1-3/8" tee shall weigh min. 1.40 pounds per lineal foot and the 7/8" tee shall weigh min 1.16 pounds per lineal foot (specify).
 - d. All steel muntin profiles must be a minimum of 1-3/4" in depth.
- C. Glazing beads shall be extruded aluminum Alloy 6063-T5 with a minimum thickness of .062 inches.

- D. Weatherstripping shall be extruded vinyl, EPDM closed cell sponge, flexible silicone or polyethylene clad urethane foam.
- E. All screws shall be furnished by manufacturer for hardware, trim, covers, anchoring, weatherbars, water dams, screens, etc. and shall be non-ferrous brass or stainless steel. Glazing bead retainer screws are plated steel.
- F. Finishing
 - 1. Non-Coastal
 - a. Cleaning.
 - b. Pretreatment.
 - c. Epoxy E-Coat primer.
 - d. Epoxy powder primer.
 - e. Ultrathane polyurethane top coat.

2.3 FABRICATION

- A. Fabricate steel windows in accordance with approved shop drawings.
- B. Corners of frame shall be mitered or coped then solidly welded. Exposed and contact surfaces shall be finished smooth flush with the adjacent surfaces. All interior and exterior rail bar and muntin joints shall be face welded and ground smooth.
- C. Muntins:
 - 1. True Divided Lite muntins shall be coped and welded to the perimeter frame. Muntin intersections shall be slotted, cross notched and welded. All interior and exterior muntin joints shall be face welded and ground smooth.
- D. Glazing:
 - 1. All windows shall be designed for inside or outside glazing.
 - 2. Provide replaceable continuous glazing beads to suit the glass as specified.
 - 3. Glazing beads shall be cut and shop fitted to each glass lite prior to shipment.
 - 4. Manufacturer to provide correct glazing wedge and tape in accordance with the tested assembly.
- E. Weatherstrip:
 - 1. All ventilators shall receive continuous triple weatherstripping that shall be applied to the integral weatherstrip grooves in the interior and exterior contact surfaces of the frame and ventilator profiles. Weatherstripping that is surface applied or requires additional retainer or requires screws for application shall not be acceptable.

2.4 FACTORY FINISHING

- A. Standard Manufacturers non-coastal finishing:
 - 1. Cleaning:
 - a. All hot-rolled steel profiles must be acid pickled as defined by SSPC – SP8 to ensure a pristine, white metal substrate prior to fabrication.

2. Pretreatment:

- a. Following welding and all machining operations, hot-rolled products and accessories are subjected to the following pretreatments geared specific to projects proximity to corrosive environment. Cold-rolled, formed sheet steel components are manufactured from A60 galvanized sheet and subjected to applicable processes outlined below.
- b. Inland locations (12-stage process) – Greater than one (1) mile from salt water and/or similar corrosive environments.
 - i. Alkaline cleaning spray.
 - ii. Alkaline cleaning submersion.
 - iii. Water immersion rinse combo.
 - iv. Water immersion rinse clean.
 - v. Acid immersion.
 - vi. Neutralizing rinse.
 - vii. Water immersion rinse clean.
 - viii. Conditioner immersion.
 - ix. Zinc phosphate immersion.
 - x. Rinse immersion.
 - xi. Sealer immersion.
 - xii. Water reverse osmosis rinse immersion.

3. Epoxy Primer:

All pickled and pretreated frames and accessories are immersed into an electrostatic bath of epoxy primer to ensure all substrates are encapsulated evenly and completely. Use of spray primers only will not be an acceptable alternative to this process due to benefits from additional cleaning and frame submersion.

- a. Permeate spray.
- b. Permeate rinse.
- c. Epoxy primer immersion and electrostatic encapsulation
- d. Water reverse osmosis rinse
- e. Oven-cure, 45 minutes @ 350° F

4. Epoxy Powder Primer:

Following pre-treatments and E-coat system, all frames and accessories shall receive an abrasion resistant powder coating prior to final top-coat.

- a. Powder is applied electrostatically over cured E-coat to a dry film thickness (DFT) of 2.0 – 3.0 mils.
- b. Parts oven baked at 325° F to completely cure prior to final top coat.
- c. Powder coat is intended as an intermediate finish applied prior to the final finish top coat.

5. Acrylic Polyurethane Top Coat.

Following all pre-treatments, electrostatic coat and powder abrasion layer, all products shall receive Manufacturer's standard polyurethane finish with touch-up capability, low chalking and fading characteristics, unlimited color matching, and 70,000+ standard colors, including metallics.

6. Finishes Overview:

- a. Combined overall dry film thickness (DFT) shall be a minimum of 4.6 mils (inland locations)
- b. Overall process shall provide full documented compliance with the following criteria:
 - i. Acid Pickling: SSPC-SP8.
 - ii. Paint Blistering: ASTM D714.
 - iii. Humidity: ASTM D4585.
 - iv. Painted Products in Corrosive Environment: ASTM D1654.
 - v. Salt Spray (Fog): ASTM B117.
 - vi. Cyclic Fog/Dry (Prohesion): ASTM G85.
 - vii. Salt Fog/UV Painted Metal: ASTM D5894.
 - viii. Pull Off Strength of Coating: ASTM D4541.

PART 3 - EXECUTION

3.1 INSPECTION

- A. Window openings shall conform to details, dimensions and tolerances shown on the window manufacturer's approved shop drawings. Review existing conditions prior to installation and provide written report of suitability for installation to contractor. If deficiencies are found in the openings to receive steel indows, notify contractor and do not proceed with installation until the deficiencies are corrected.
- B. Conditions which may adversely affect the window installation must be corrected before installation commences.
- C. The wash down of the adjacent masonry or surrounding substrate must be completed before erection commences to prevent damage to the finish by the cleaning materials.

3.2 INSTALLATION

- A. Windows specified under this section shall be installed by experienced personnel.
- B. Install windows in openings in strict accordance with approved shop drawings.
 1. Set units plumb, level and true to line, without warp or rack of frames.
 2. Anchor units securely to surrounding construction with approved fasteners.
 3. The exterior joints between the windows, trim and mullions shall be properly sealed watertight with an approved sealant and neatly pointed.
- C. Attach ventilator hardware, as required, and adjust ventilators to operate smoothly free from twist and to be weathertight when closed.

D. Attach loose muntin grids per approved shop drawings, if applicable.

E. Repair any abraded areas of the factory finish.

3.3 CLEANING

A. Window installer shall leave window surfaces clean after installation and ready to receive glass and glazing. The window installer will not be responsible for final cleaning.

END OF SECTION

THIS PAGE IS LET INTENTIONALLY BLANK

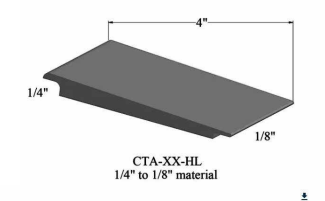
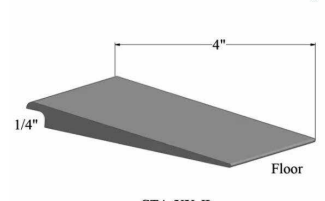
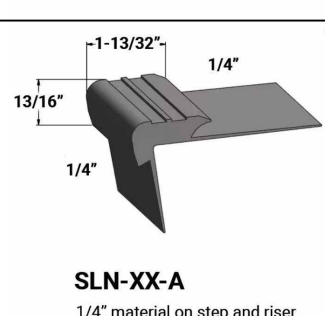
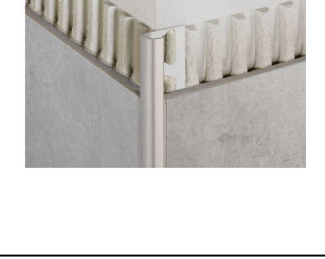
ROOM FINISH SCHEDULE

No.	Room Name	Floor	Base	WALLS				Ceiling	Finish Schedule Notes
				North	East	South	West		
001	UTIL ADMIN LOBBY	RES-2	VB-1	PT-1	PT-1	PT-2	PT-2	GWB	B
001B	STAIR	SC	VB-1						
002	UTIL ADMIN CONFERENCE ROOM	CPT-1, 2, 3	VB-1	PT-1	PT-3	PT-1	PT-1	ACT-1/GWB	A, F
03	STORAGE	SC	VB-1	PT-1	PT-1	PT-1	PT-1	ACT-1	
003	UTIL ADMIN STORAGE	CPT-1	VB-1	PT-1	PT-1	PT-1	PT-1	ACT-1	
004	UTIL ADMIN OFFICE 6	CPT-1, 2	VB-2	PT-1	PT-1	PT-1	PT-1	ACT-1	A
05	STORAGE	SC	VB-2	PT-1	PT-1	PT-1	PT-1		
005	UTIL ADMIN WOMEN'S TOILET ROOM	EPX-1	EPXB-1	PT-1	PT-1	WTIL-1, 2, 3/PT-1	PT-1	ACT-1	B
006	UTIL ADMIN MECH.	SC	VB-2	PT-1	PT-1	PT-1	PT-1		
07	STORAGE	SC	VB-2	PT-1	PT-1	PT-1	PT-1		
007	UTIL ADMIN EVS	SC	VB-2	PT-1	PT-1	PT-1	PT-1	ACT-1	
008	UTIL ADMIN MEN'S TOILET ROOM	EPX-1	EPXB-1	WTIL-1, 2, 3/PT-1	PT-1	PT-1	PT-1	ACT-1	B
009	UTIL ADMIN BREAK ROOM	RES-2	VB-2	PT-1	PT-1	PT-1	PT-1	ACCENT PAINT	B
010	UTIL ADMIN OFFICE 5	CPT-1, 2	VB-2	PT-1	PT-1	PT-1	PT-1	ACT-1/GWB	A
011	UTIL ADMIN OFFICE 4	CPT-1, 2	VB-2	PT-1	PT-1	PT-1	PT-1	ACT-1	A
012	UTIL ADMIN COPIER, PLOTTER & FLAT FILES	RES-2	VB-2	PT-1	ACCENT PAINT	PT-1	PT-1	ACT-1	B
013	UTIL ADMIN OFFICE 3	CPT-1, 2	VB-2	PT-1	PT-1	PT-1	PT-1	ACT-1	A
014	UTIL ADMIN OFFICE 2	CPT-1, 2	VB-2	PT-1	PT-1	PT-1	PT-1	ACT-1	A
015	UTIL ADMIN IT SERVER	RES-2	VB-2	PT-1	PT-1	PT-1	PT-1	ACT-1	A
016	UTIL ADMIN OFFICE 1	CPT-1, 2	VB-2	PT-1	PT-1	PT-1	PT-1	ACT-1	A
017	UTIL ADMIN CIRCULATION	CPT-2, 3	VB-2	PT-1	ACCENT PAINT	PT-1	PT-1	ACT-1/GWB	A, F
018	UTIL ADMIN STORAGE	CPT-1	VB-2	PT-1	PT-1	PT-1	PT-1	ACT-1	
100	LOBBY	EPX-1	EPXB-1	NOTE-S	NOTE-S	ACCENT PAINT	PT-1/NOTE-T	REFER TO RCP/NOTE-U	
101	OFFICE 1	CPT-4	VB-1	NOTE-S	NOTE-S	NOTE-T	NOTE-T	REFER TO RCP/NOTE-U	
102	CONF. RM	CPT-4	VB-1	ACCENT PAINT	NOTE-S	NOTE-S	PT-1	REFER TO RCP/NOTE-U	
103	OFFICE 3	CPT-4	VB-1	PT-1	PT-1	NOTE-S	PT-1	REFER TO RCP/NOTE-U	
104	OFFICE 2	CPT-4	VB-1	NOTE-S	PT-1/GWB/	NOTE-T	NOTE-S	REFER TO RCP/NOTE-U	
105	OFFICE 4	CPT-4	VB-1	PT-1	PT-1/NOTE-S	NOTE-S	NOTE-S	REFER TO RCP/NOTE-U	
106	CORRIDOR	EPX-1	EPXB-1	PT-1/NOTE-T	PT-1	PT-1	PT-1	REFER TO RCP/NOTE-U	
107	SERVER IT	SC	VB-1	PT-1	PT-1	PT-1	PT-1	REFER TO RCP	
108	MEN'S LOCKER ROOM	EPX-1	EPXB-1	PT-1	PT-1	PT-1	PT-1	REFER TO RCP	
109A	MEN'S SHOWERS	EPX-1	EPXB-1	PT-1/WTIL-4	PT-1/WTIL-4	PT-1/WTIL-4	PT-1	ACCENT PAINT	
109	MEN'S FOYER	EPX-1	EPXB-1	PT-1	PT-1	PT-1	PT-2	REFER TO RCP	
109A	MEN'S TOILET ROOM	EPX-1	EPXB-1	PT-1	PT-1	WTIL-1, 2, 3, PT-1	PT-1	REFER TO RCP	
110	CORRIDOR	EPX-1	EPXB-1	PT-1	PT-1	PT-1	PT-1	REFER TO RCP	
111	LAUNDRY	EPX-1	EPXB-1	PT-1	PT-1	PT-1	PT-1	REFER TO RCP	
112	KITCHEN	RES-1	VB-1	PT-1	ACCENT PAINT	PT-1	PT-1	REFER TO RCP	
113	SINGLE RESTROOM	EPX-1	EPXB-1	PT-1	PT-1	WTIL-1, 2, 3, PT-1	PT-1	REFER TO RCP	
114	EVS	EPX-1	EPXB-1	PT-1	PT-1	PT-1/WTIL-4	PT-1	ACT-1	
115	STORAGE	EPX-1	EPXB-1	PT-1	PT-1	PT-1	PT-1	ACT-1	
116	STAFF WORK AREA	EPX-1	EPXB-1	PT-1	ACCENT PAINT	PT-1	PT-1	ACT-1	
116A	FIELD SUPERVISOR'S OFFICE 5	EPX-1	EPXB-1	PT-1	PT-1	PT-1	PT-1	ACT-1	
117	BREAK AREA	RES-1	VB-1	PT-1	PT-1	PT-1	PT-1	REFER TO RCP	
B0	RINSE BASIN	EPX-1	EPXB-1	PT-1	PT-1	PT-1	PT-1	REFER TO RCP	
B1	TOOL STORAGE	SC	VB-1	PT-1	PT-1	PT-1	PT-1	REFER TO RCP	
B2	PARTS STORAGE	SC	VB-1	PT-1	PT-1	PT-1	PT-1	REFER TO RCP	
B3	TOILET	EPX-1	EPXB-1	FRP-1/PT-1 GLOSS	PT-1: GLOSS FINISH	PT-1: GLOSS FINISH	PT-1: GLOSS FINISH	REFER TO RCP	B
B4	STORAGE	SC	VB-1	PT-1	PT-1	PT-1	PT-1	REFER TO RCP	

FINISH SCHEDULE NOTES

- A. MULTIPLE FLOOR FINISH MATERIALS, PLEASE REFER TO FLOOR FINISH PLAN A901 AND A902
- B. REFER TO INTERIOR ELEVATIONS, CASEWORK ELEVATIONS AND FLOOR FINISH PLANS FOR SPECIFIC WALL FINISHES AND ACCENT PAINT WALLS.
- C. ALL GWB SOFFITS TO BE PAINTED PT-10 FLAT FINISH U.O.N.
- D. ALL GWB WALLS TO BE PAINTED PT-1 EGGSHELL FINISH U.O.N.; REFER TO FINISH SCHEDULE AND ELEVATIONS FOR ACCENT PAINT LOCATIONS
- E. ALL RESILIENT BASE TO BE 100' OR MORE ROLLS, NOT 48" INDIVIDUAL LENGTHS
- F. REFER TO REFLECTED CEILING PLANS FOR MULTIPLE FINISHES
- G. CONTINUOUS ADHESION REQUIRED BETWEEN WALL BASE. INSTALLED BASE MUST BE SMOOTH WITH NO RIPPLES. NO SEAMS WITHIN 48" OF INSIDE OR OUTSIDE CORNERS.
- H. ALL CLOSETS TO BE FINISHED TO MATCH ADJOINING ROOM U.O.N
- I. PROVIDE 135 DEGREE FRAMELESS CONCEALED HINGES (EUROPEAN STYLE) AND HEAVY DUTY FULL EXTENSION DRAWER GLIDES ONLY.
- J. NO ACCESS PANELS TO OCCUR AT GWB CEILINGS/ SOFFITS
- K. PROVIDE ADDITIONAL BLOCKING AND/OR ANCHORS ABOVE CEILING AS REQUIRED FOR LIGHT FIXTURE AND/OR CEILING HUNG EQUIPMENT.
- L. REFER TO INTERIOR ELEVATIONS FOR LOCATION OF WALL MOUNTED AV EQUIPMENT OR DIGITAL SIGNAGE
- M. STAIR TREAD RISERS JOHNSONITE PLATINUM 21, CG SAFE "T" RIB SQUARE NOSE
- N. PAINT HOLLOW METAL FRAMES PT-11
- P. REFER TO CASEWORK PLANS AND DETAILS FOR ADDITIONAL FINISHES
- Q. REFER TO ENLARGED PLANS AND ELEVATIONS FOR SPECIFIC FINISH DESIGNATIONS
- R. FINAL ACCENT COLOR TO BE APPROVED BY OWNER
- S. APPLY CLEAR WALL COATING (CWC-1) TO EXISTING INTERIOR BRICK WALLS. REMOVE DUST/DIRT WHILE RETAINING EXISTING PARTIAL PAINT OR BRICK. (PATINA AND FLAKED WHITE FINISH)
- T. REMOVE PAINT FROM EXTG. WOOD PANELING AND INTERNAL STOREFRONT. STAIN TO MATCH EXTG. CLEAN EXTG STAINED STOREFRONT AND PANELING REFINISH TO MATCH ORIGINAL STAIN - CLEAR LACQUER FINISH TYP.
- U. PAINT EXPOSED CONCRETE CEILING AND BEAM PT-10

FINISHES TRANSITIONS

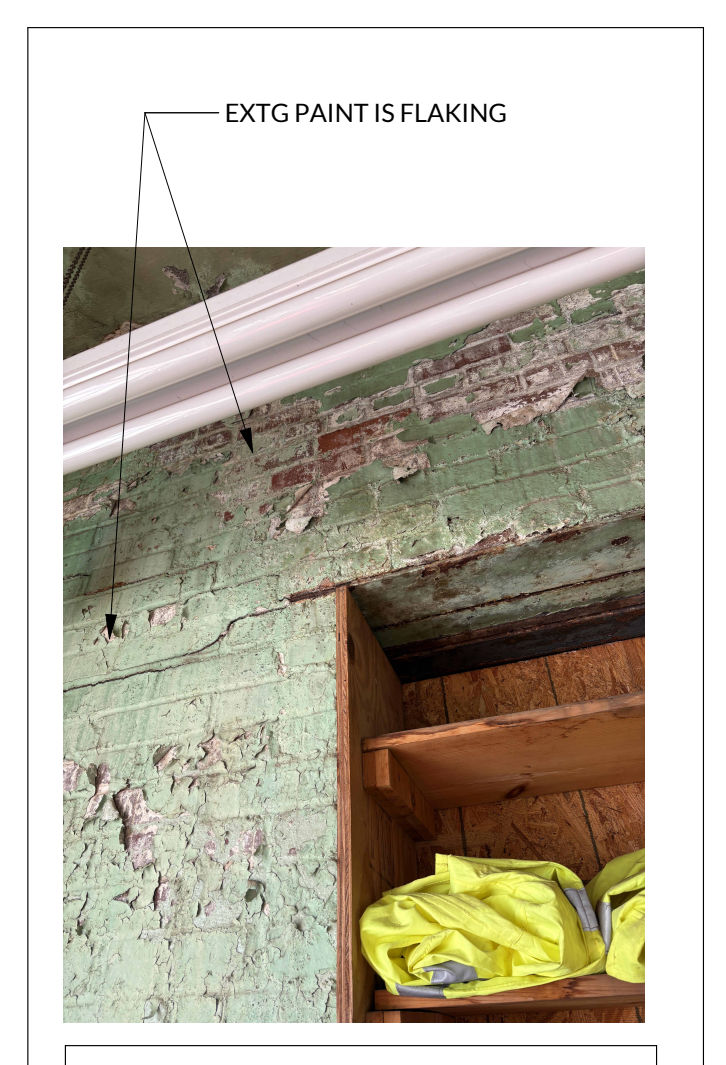
TR-1: CARPET TILE TO RESILIENT JOHNSONITE WHEELED TRAFFIC TRANSITION	
TR-2: RESILIENT TO EPOXY	
TR-3 CARPET TILE TO EPOXY/SEALED CONCRETE	
STR-1 STAIR NOSING WITH CARPET TREAD AND RISER	
WTR-1: WALL TRIM EPOXY TO GWB SCHLUTER JOLLY PROFILE	
WTR-2: WALL TRIM OUTSIDE CORNER SCHLUTER RONDEC PROFILE	
GC TO PROVIDE TRANSITION SAMPLES WITH CONTROL SAMPLE TRIM DIMENSIONS AND SIZING TO BE DETERMINED DURING CA PROCESS	

INTERIOR FINISH MATERIAL LEGEND

Code	Manufacturer	BASIS OF DESIGN DESCRIPTION	ALT. MANUFACTURER 2- MATCH BASIS OF DESIGN	ALT. MANUFACTURER 3- MATCH BASIS OF DESIGN	Comments
ACT-1	ARMSTRONG	ACOUSTIC CEILING TILE-DUNE, 24" x 24" / 5/8" THK, EDGE ANGLED	USG	CERTAINTEED	NRC-0.5; CAC: 35
AWP-1	MODULAR ARTS	ACCENT WALL PANEL - CHISLEY 32" X 32"	B+N INDUSTRIES	ARTICURE	DECORATIVE EMBOSSED PANEL-LOWER LOBBY: https://modulararts.myshopify.com/products/chisley-panels
CG-1	CAP CORNER GUARDS	2" x 2" x 60" STAINLESS STEEL CORNER GUARD	KOROSEAL	INPRO	MECHANICALLY FASTENED
CG-2	CAP CORNER GUARDS	END WALL U/WRAP 60" HIGH	KOROSEAL	INPRO	MECHANICALLY FASTENED
CPT-1	SHAW CONTRACT	COLOR AT WORK II: STYLE CHROMATONE 5T444: COLOR: SILVER CHARCOAL 07555	MILLIKEN	INTERFACE	FIELD TILE 18" X 36"
CPT-2	SHAW CONTRACT	COLOR AT WORK II: STYLE CHROMATONE 5T444: COLOR: INDIGO CHARCOAL 07485	MILLIKEN	INTERFACE	ACCENT BLUE CARPET TILE 18" X 36"
CPT-3	SHAW CONTRACT	COLOR AT WORK II: STYLE SATURATE ST109: COLOR: INDIGO 07485	MILLIKEN	INTERFACE	ACCENT SATURATE BLUE TILE - 9" X 36"
CPT-4	J+J FLOORING	KINETIX: STYLE - DIGITAL 1859/3573/COLOR: ZONE 3573: SIZE 24" X 24" BACKING POLYESTER FELT CUSHION	E F CONTRACT	KINETIX	QUARTER TURN INSTALLATION: https://www.jfflooringgroup.com/product/digital/
CWC-1	H&C	WATER BASED CLEAR WALL COATING			AS PER ADDENDUM 3 ISSUED 1.21.26
EPX-1	DUR-A-FLEX	EPOXY FLOORING: COLOR OCEAN; MICRO FLECK	SHERWIN WILLIAMS RESULFLOOR	SIKA CORP.	
EPXB-1	DUR-A-FLEX	EPOXY BASE: COLOR OCEAN; MICRO FLECK	SHERWIN WILLIAMS RESULFLOOR	SIKA CORP.	6" BASE
FRP-1	MARLITE	FIBER GLASS BOARD - 4" x 8" SMOOTH FINISH	CRANE COMPOSITES	KAL-LITE	INSTALL AS PER MANUFACTURERS' RECOMMENDATIONS
GR-1	LATICRETE GROUT	NATURAL GREY #24	MARFI	CUSTOM BUILD PRODUCTS	SEAL GROUT AS PER MANUFACTURERS' RECOMMENDATIONS
INTERIOR DOORS	MASONITE	WHITE OAK, PLAIN SLICED, CLEAR FINISH	CECO DOOR	LAMBTON DOORS	SEE ARCHITECTURAL SPECIFICATIONS
PLAM-1	WILSONART	LOST PINE Y0473K16: 16 CASUAL RUSTIC FINISH WITH AEON RESISTANCE	NEVAMAR	FORMICA	RUN GRAIN HORIZONTAL TYP., BASE CABINET MAIN BREAKROOM
PLAM-2	WILSONART	WHITE CYPRESS 7976-K SOFT GRAIN FINISH AEON SCRATCH RESISTANCE	NEVAMAR	FORMICA	UPPER CABINETS - MAIN BREAKROOM - FINAL APPROVAL REQUIRED
PLAM-3	PANOLAM	NEVAMAR WZ0065 YUNNAN- FINISH ARP	NEVAMAR	FORMICA	LOWER CABINETS - LOWER LEVEL BREAKROOM https://panolam.com/pattern-search/yunnan/
PLAM-4	WILSONART	VAPOR STRANDZ 4939K-18, LINEARITY FINISH AEON SCRATCH RESISTANT	NEVAMAR	FORMICA	UPPER CABINETS - LOWER LEVEL BREAK ROOM
PLAM-5	WILSONART	TRACELESS ACORN VELVET ELM: 15602-31	NEVAMAR	FORMICA	https://www.wilsonart.com/acorn-velvet-elm-15602-LOWER LOBBY MILLWORK
PT-1	SHERWIN WILLIAMS	FIELD WALL COLOR - SNOW BOUND SW7004- EGGSHELL	BENJAMIN MOORE	PPG INDUSTRIES	FINAL CLIENT APPROVAL REQUIRED
PT-2	SHERWIN WILLIAMS	ACCENT WALL PAINT-JACARANDA SW6802	BENJAMIN MOORE	PPG INDUSTRIES	FINAL CLIENT APPROVAL REQUIRED
PT-3	SHERWIN WILLIAMS	ACCENT WALL PAINT- OPEN SEAS SW 6500	BENJAMIN MOORE	PPG INDUSTRIES	FINAL CLIENT APPROVAL REQUIRED
PT-4	SHERWIN WILLIAMS	ACCENT WALL PAINT-AQUARIUM SW 6767	BENJAMIN MOORE	PPG INDUSTRIES	FINAL CLIENT APPROVAL REQUIRED
PT-5	SHERWIN WILLIAMS	WOOD BASE PAINT- SEMI GLOSS-SW6004 MINK	BENJAMIN MOORE	PPG INDUSTRIES	FINAL CLIENT APPROVAL REQUIRED
PT-10	SHERWIN WILLIAMS	CEILING WHITE	BENJAMIN MOORE	PPG INDUSTRIES	GWB SOFFITS U.O.N.
PT-11	SHERWIN WILLIAMS	HOLLOW METAL DOOR FRAME PAINT- REQUISITE GREY SW 7023	BENJAMIN MOORE	PPG INDUSTRIES	SEMI GLOSS
RES-1	J+J FLOORING	LVT- STYLE: MAKE YOUR MARK; COLOR: 1063 SHADOW 9" X 48" 3mm THK ENHANCED UV CURED URETHANE W/CERAMIC BEAD	MANNINGTON	MOHAWK	10 YR COMMERCIAL WARRANTY: REQUIRED ADHESIVE- COMMERCIAL ON PREMIUM LVT ADHESIVE
RES-2	J+J FLOORING	LVT STYLE: FUSION V506- COLOR: 1054 MELTING FINISH - ENHANCED UV URETHANE WITH CERAMIC BEAD: 9" X 48"	MANNINGTON	MOHAWK	7 YR LIGHT COMMERCIAL WARRANTY: REQUIRED ADHESIVE COMMERCIAL HV ADHESIVE
RS-1	LUTRON	ROLLER SHADES- MANUAL ROLLER SHADE- WITH FASCIA	MECHOSHADE	HUNTER DOUGLAS	FABRIC - E SCREEN STYLE; 3% OPENESS - WHITE PEARL, SEALED HEMBAR
SC	GHOST SHIELD	SEALED CONCRETE	LATICRETE	KEMPER SYSTEMS	
SSM-1	GEOS	SOLID SURFACE COLOR: OCEAN- 2mm THICK	KESTONE	COSENTINO ECO	https://caragreen.com/brands/geos/
SSM-2	GEOS	SOLID SURFACE COLOR: ST LAWRENCE- 2mm THICK	KESTONE	COSENTINO ECO	https://caragreen.com/brands/geos/
VB-1	JOHNSONITE	VINYL BASE - COVE 4" COLOR: CHARCOAL #20	TARKETT	FLEXCO	
VB-2	RELIABILT	FAS BETTER SRS POPLAR PAINTED WOOD BASE 8" HIGH X 3/4" THK. SQUARE PROFILE POLAR - COLOR PT-5	JMP WOOD	ADVANTAGE LUMBER	MUST CONCEAL CMU AND BUTT TO J MOLD AT U/SIDE OF GWB- SEE ARCH. DETAIL
WOC-1	SHAW CONTRACT	WALK OFF CARPET TILE: BON JOUR II TILE COLOR STERLING 31557- 24" x 24"	MILLIKEN	INTERFACE	
WTIL-1	DALTILE	WALL TILE ACCENT: COLOR WHEEL LINEAR- COLOR BISCUIT K175- SIZE 4" X 12"	AMERICAN OLEAN	CROSSVILLE	USE WITH GR-1
WTIL-2	DALTILE	WALL TILE ACCENT: COLOR WHEEL LINEAR- COLOR MATTE ARCHITECTURAL GREY0709- SIZE 4" X 12"	AMERICAN OLEAN	CROSSVILLE	USE WITH GR-1
WTIL-3	DALTILE	WALL TILE ACCENT: COLOR WHEEL LINEAR- COLOR SEA BREEZE 1174 - SIZE 4" X 12"	AMERICAN OLEAN	CROSSVILLE	USE WITH GR-1
WTILB-1	DALTILE	WALL TILE BASE 4" X 12" FLAT TOP COVE BASE A34C1MOD	AMERICAN OLEAN	CROSSVILLE	USE WITH GR-1, TYPICAL WALL BASE TILE



REFERENCE NOTE - T, EXTG INTERIOR WOOD STOREFRONT



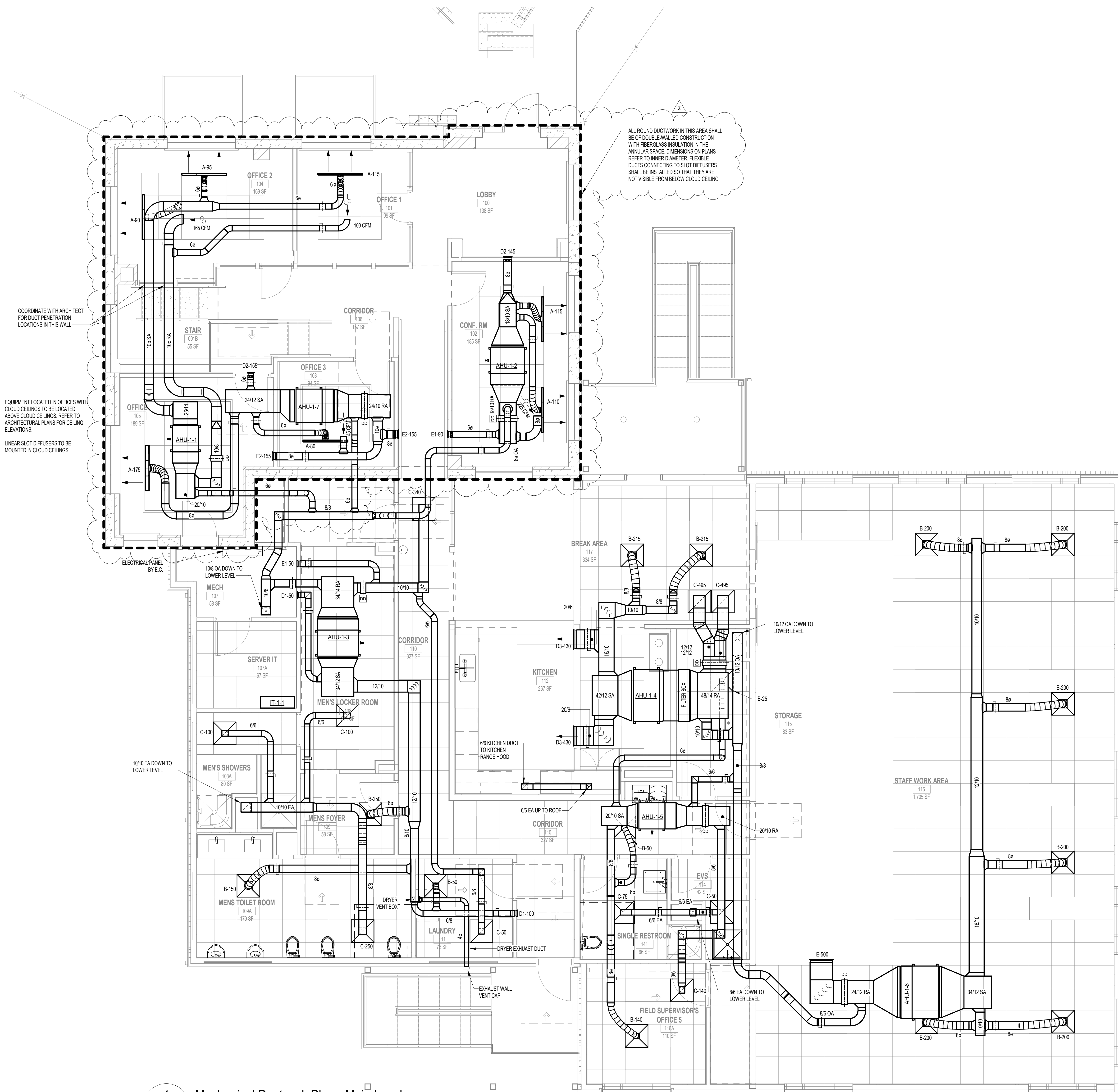
REFERENCE NOTE - S, EXTG PAINTED BRICK WITH WHITE AND PATINA FINISH



Town of Hillsborough
Adron F. Thompson
Addition & Renovation

715 Dimmocks Mill Road, Hillsborough, NC

No.	Date	Description
2	2026.01.23	Addendum 4



1 Mechanical Ductwork Plan - Main Level
M202 SCALE: 1/4" = 1'-0"